

Bathroom Guide

h *Hevac*



Contents

Page 1&2: Lecico Sanitary Ware

- Atlas Close Coupled Lever
- Atlas Close Coupled Top Flush
- Atlas Close Coupled Cloakroom
- Atlas Back-To-Wall
- Atlas Low Level
- Lecico Steps Close Coupled

Page 3: Ideal Standard Sanitary Ware

- Alto Close Coupled
- Sandringham 21 Close Coupled
- Playa Option Suite

Page 4: Brassware

- Contract Range
- Single Lever Basin Mixers
- Dual Flow & Single Lever Sink Mixers
- Bath/ Shower Mixers
- Non Concussive Taps

Page 5: Heated Towel Rails & Valves

- Tekno Towel Rails
- Style, Pegler & Titan Valves

Page 6: Rosery Shower Doors

- Corner Entry , Quadrant
- Bi-Fold, Pivot
- Offset Quad, Sliding

Page 7: Screen/Trays & Water Heaters

- Single Panel Bath Screen
- Shower Trays & Waste
- Ariston & Pullin Water Heaters

Page 8: Electric Shower Guide

- Shower Selection Guide

Page 9: Electric Showers

- Pumped Electric - Tank Fed
- Electric - Mains Fed
- Power Shower - Gravity Fed

Page 10: Mixer Showers & Booster Pumps

- Ideal Standard Mixer Showers
- Ideal Standard Bar Valve
- Intatec Bar Valve
- Monsoon Contract Booster Pumps

Page 11: Grundfos & Monsoon Pumps

- Grundfos Brass Body Pumps
- Monsoon Brass Body Pumps

Page 12: Shower Accessories & Saniflo Units

- Shower Head
- Rail Kits
- Hoses
- Saniflo Macerators
- Saniflo Pumps

Page 13: Pan Connectors & Traps

- Pan Connectors
- Shower Trap
- Bath Trap
- Pedestal Trap
- Sink Appliance Trap

Page 14: Furniture & Accessories

- Kinsale Vanity Unit
- Seats
- Waste Sets
- P Trap & S Trap

Page 15: Ballvalves & Syphon Kits

- Wirquin Ballvalves
- McDee Syphon Kits

Page 16: Concealed Cisterns & DocM

- Ideal Standard Conceala Cisterns
- Dual Flush Plate
- Inta DocM Packs

Page 16: Ideal Standard DocM & Mixing Valve

- Ideal Standard Doc M Packs
- Titan Mixing Valves

Lecico Sanitary Ware



Atlas Close Coupled

Atlas 55cm 2th Basin	Code: ATBW552TH
Atlas Full Pedestal	Code: ATPED
1/2" Standard Basin Taps	Code: MAYMH01CP
Basin Waste Plug & Chain	Code: CPBW125
Atlas C/C Pan	Code: CCWPAT
Atlas C/C Cistern	Code: CCWCATL
Bemis Seat & Cover	Code: SEATBEMIS
Atlas C/C Cistern Pack (Lever Type)	Code: CCWCPAT
Avon 1700 x 700 T/G Bath	Code: AVON1700TG
1700mm Front Bath Panel	Code: BTPANELSUP
700mm End Bath Panel	Code: BTPANELESUP
3/4" Standard Bath Taps	Code: 075CBTH
Bath Trap Combination Set	Code: BTC150075



Atlas Close Coupled Top Flush

Atlas 55cm 1th Basin	Code: ATBW551TH
Atlas Full Pedestal	Code: ATPED
1/2" Single Lever Basin Mixer c/w Waste	Code: BMDEL1
Atlas C/C Pan	Code: CCWPAT
Atlas C/C Cistern Top Flush	Code: CCWCAT
Bemis Seat & Cover	Code: SEATBEMIS
Atlas C/C Cistern Pack	Code: CCCPAT
Avon 1700 x 700 T/G Bath	Code: AVON1700TG
1700mm Front Bath Panel	Code: BTPANELSUP
700mm End Bath Panel	Code: BTPANELESUP
3/4" Bath Filler	Code: MAYCOSBFCP
Bath Trap Combination Set	Code: BTC150075



Atlas C/C Cloakroom

Atlas C/C Pan	Code: CCWPAT
Atlas C/C Cistern	Code: CCWCATL
Bemis Seat & Cover	Code: SEATBEMIS
Atlas C/C Cistern Pack (Lever Type)	Code: CCWCPAT
Atlas 18" x 11" 2th Basin	Code: ATBW1811
1/2" Standard Basin Taps	Code: MAYMH01CP
Basin Waste Plug & Chain	Code: CPBW125
1 1/4" Chrome Bottle Trap	Code: BTRAP125CP

Lecico Sanitary Ware



Atlas Back to Wall

Atlas BWTP
Bemis Seat & Cover
Conceala 2 Dual Flush Cistern
Chrome Dual Flush Plate

Code: ABTWP
Code: SEATBEMIS
Code: S362467
Code: S4399AA



Atlas Low Level

Atlas L/L Pan
Atlas L/L Cistern
Atlas L/L Cistern Pack
Bemis Seat & Cover
Atlas 55cm 2th Basin
Atlas Full Pedestal
1/2" Standard Basin Taps
Basin Waste Plug & Chain
Avon 1700 x 700 T/G Bath
1700mm Front Bath Panel
700mm End Bath Panel
3/4" Standard Bath Taps
Bath Trap Combination Set

Code: LLWPAT
Code: LLWCAT
Code: LLCPKAT
Code: SEATBEMIS
Code: ATBW552TH
Code: ATPED
Code: MAYMH01CP
Code: CPBW125
Code: AVON1700TG
Code: BTPANELSUP
Code: BTPANELESUP
Code: 075CBTH
Code: BTC150075



Lecico Steps Suite

Steps C/C Pan
Steps C/C Top Flush Cistern
Manhattan Soft Close Seat
Steps 53cm 1th Basin
Steps Full Pedestal
Square Lever Basin Mixer c/w Waste

Code: CCWPST
Code: CCWCST
Code: MHATSEAT
Code: STBW531TH
Code: STPED
Code: SQLBM

Ideal Standard Suites



Alto Close Coupled

Alto C/C Pan	Code: E754301
Alto C/C Top Flush Cistern	Code: E751401
Alto Seat & Cover	Code: E759001
Alto 55cm 1th Basin	Code: E745501
Alto Full Pedestal	Code: E740201
Single Lever Basin Mixer c/w Waste	Code: BMDEL1
Alto 1700 x 700 T/G Bath	Code: E769401
Uniline 1700mm Front Panel	Code: E413001
¾" Standard Bath Taps	Code: 075CBTH
Bath Trap Combination Set	Code: BTC150075



Sandringham 21 Suite

Sandringham C/C Pan	Code: E896301
Sandringham C/C Top Flush Cistern	Code: E896601
Sandringham Seat & Cover	Code: E907601
Sandringham 50cm 2th Basin	Code: E894601
Sandringham Full Pedestal	Code: E897601
½" Standard Basin Taps	Code: MAYMH01CP
Basin Waste Plug & Chain	Code: CPBW125
Sandringham 1700 x 700 T/G Bath	Code: E028401
Sandringham 21 1700mm Front Panel	Code: S101901
Sandringham 21 700mm End Panel	Code: S102001
¾" Bath/Shower Mixer	Code: 075CBM
Bath Trap Combination Set	Code: BTC150075



Playa Option Suite

Playa C/C Pan	Code: E896301
Playa C/C Top Flush Cistern	Code: E896601
Playa Soft Close Seat & Cover	Code: E907601
Playa 55cm 1th Basin	Code: E894601
Playa Full Pedestal	Code: E897601
Single Lever Basin Mixer c/w Waste	Code: BMDEL1

Brassware

1/2" Contract Basin Taps



Code: MAYMH01CP

3/4" Contract Bath/Shower Mixer



Code: 075CBM

3/4" Contract Bath Taps



Code: 075CBTH

*1/2" Single Lever Basin Mixer
c/w PUW*



Code: PUL027

*1/2" Rio Single Lever Basin Mixer
c/w PUW*



Code: U88621

1/2" Dual Flow Sink Mixer



Code: 050CDFSM

1/2" Quarter Turn Sink Mixer



Code: CTPSQTSM

1/2" High Neck Sink Taps



Code: 050CHNST

*1/2" Single Lever Basin Mixer
c/w Waste*



Code: BMDEL8

1/2" Non Concussive Basin Taps



Code: NCT050

*1/2" Single Lever Basin Mixer
c/w Waste*



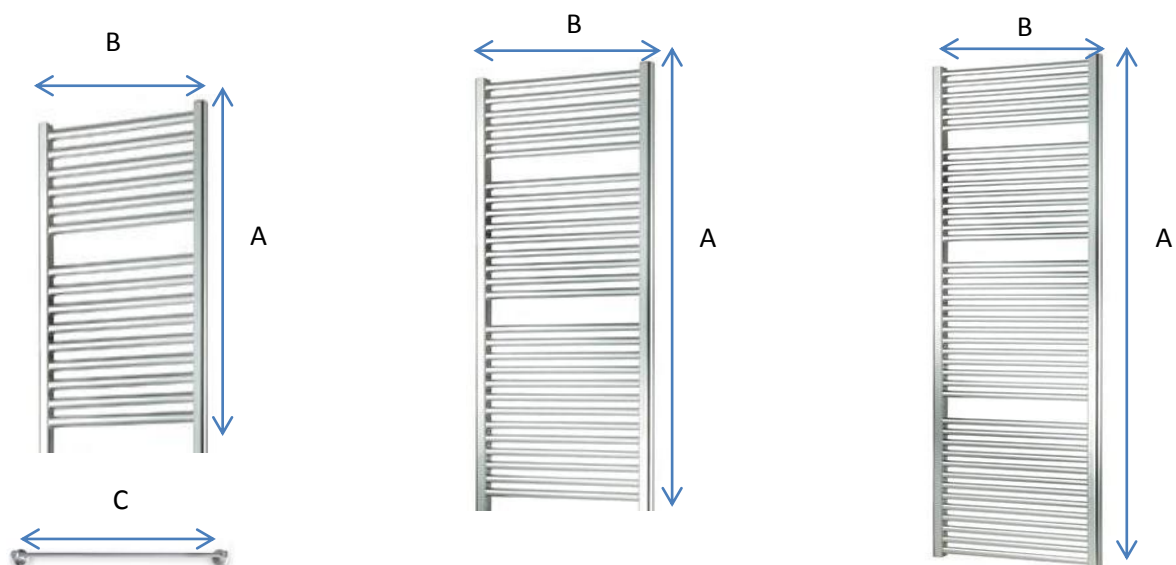
Code: BMDEL1

Rio Single Lever Bath Filler



Code: U88622

Towel Rails



Tekno Towel Rails

A	B	C	Watts ΔT	
mm	mm	mm	50°	
770	500	450	210	(Code: TEK770500CP)
770	600	550	250	(Code: TEK770600CP)
1200	500	450	324	(Code: TEK1200500CP)
1200	600	550	389	(Code: TEK1200600CP)
1800	500	450	485	(Code: TEK1800500CP)
1800	600	550	578	(Code: TEK1800600CP)

Radiator Valves

Style S4 TRV
Chrome/White



Code: STYLE S4

Style S5 TRV Chrome



Code: STYLE S5

Style S4-1 Straight TRV
Chrome/White



Code: STYLE S4-1

Style S5-1 Straight TRV Chrome



Code: STYLE S5-1

STYLE S1 & LS



Code: STYLE S1

Pegler TRV & LS



Code: PTRVLS

Titan Rad Valve CP



Code: 050TWHCP & 050TLSCP

Rosery Shower Doors

Corner Entry Door



Available in 800mm/900mm

Quadrant Door



Available in
800mm/900mm/1000mm

Bi-Fold Door



Available in
760mm/800mm/900mm*

Pivot Door



Available in
760mm/800mm/900mm*

Offset Quadrant Door



Available in
1000mm x 800mm
1200mm x 800mm/ 1200mm x 900mm

Sliding Door



Available in
1000mm/1100mm/1200mm*

[*Side Panels to suit available in 800mm/900mm](#)

Specification Details

- 1850mm High
- Easy Clean Glass
- 6mm Doors Clear Toughened Safety Glass - EN12150
- Quick Release double rollers for easy clean
- Magnetic Door Closure
- 25mm Adjustments
- Stylish Chrome Handles
- Push Down Bottom Rollers for easy Cleaning
- High Polished Stainless Steel Handles
- All Doors are Reversible
- CE Approved
- 10 Year Warranty

Bath Screen

Single Panel Bath Screen Curved



Code: NSS1

Single Panel Bath Screen Square



Code: NSSQ

Shower Trays

800/900 Quadrant Tray



Code: Q800LP/Q900LP

800/900 Square Tray



Code: S800LP/S900LP

Fast Flow Waste



Code: FFW

**Various Size Trays available on Request*

Undersink Water Heater

Ariston Europrisma



Code: USWH10

- Ariston range available from 10-100ltr*
- Pullin Evolution available in 10ltr & 15Ltr

Pullin Evolution

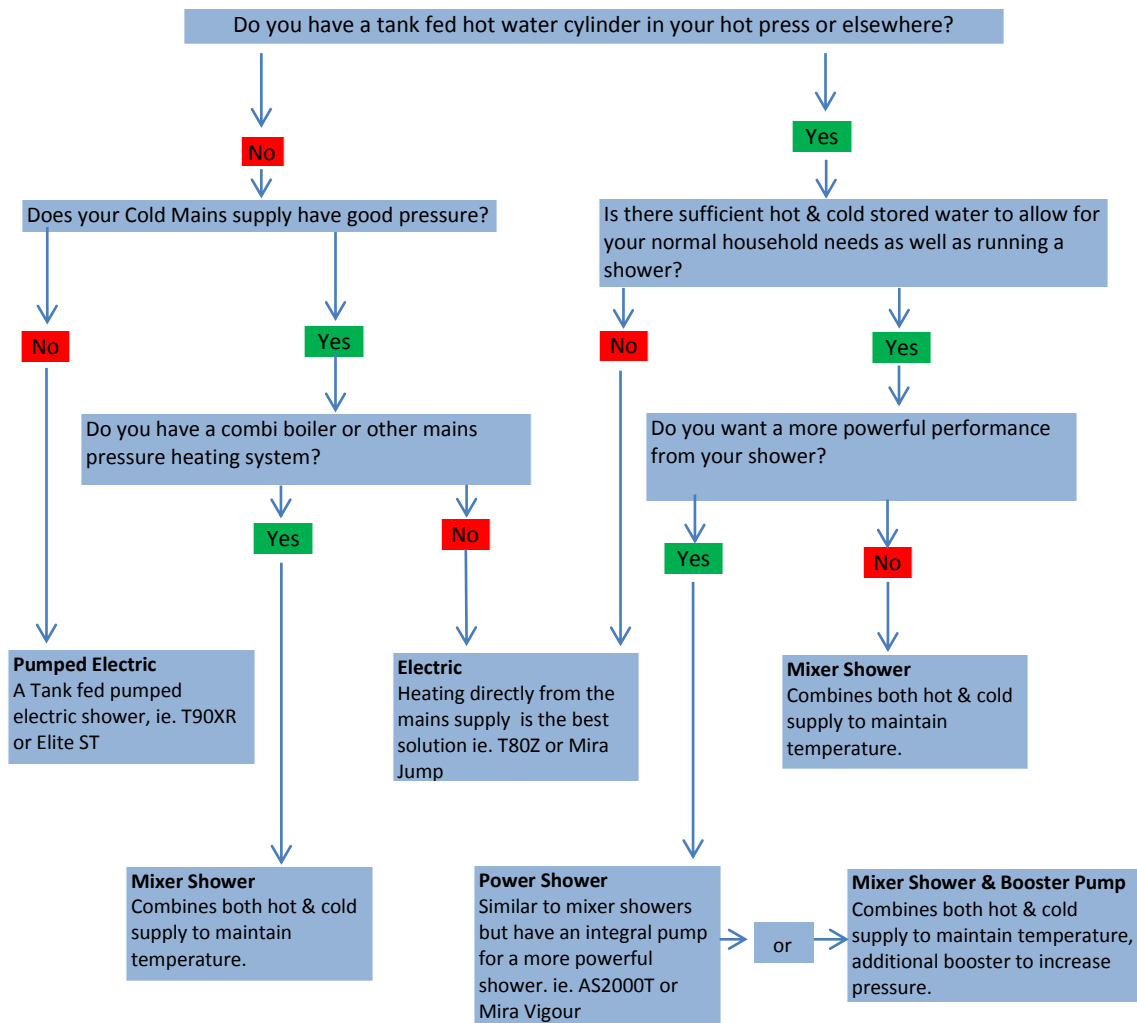


Code: PUSWH10 & PUWSH15

**10ltr Available ex-stock only*

Electric Showers & Shower Valves

Not sure what shower is most suitable? Follow our guide below.



Electric showers draw on a cold water supply and heat the water on demand.

- Cold water is heated by an element providing hot water instantly
- Quick and easy to install
- Extremely economic (99.7% energy efficient) with no hot water wastage
- Choose a higher kilowatt rating for better flow performance

Mixer showers draw from both hot and cold water supplies and usually deliver higher flow rates.

- Ideal for homes with readily available hot water such as a combi boiler or large capacity hot water cylinder
- Hot and cold water is mixed within the unit and the water delivered through the shower
- Shower options include fixed head, adjustable head, and handset on a riser rail
- Mixers with a diverter gives the option for multiple outlets from the shower unit

Power showers draw from both hot and cold water supplies and include an integrated pump to boost the flow rate.

- Offer low pressure systems the option of a high flow rate shower
- Hot and cold water is mixed within the unit and the water is delivered through the shower

Electric Showers

Triton T90 XR



Code: T90XR (Tank)

Mira Elite ST



Code: ELITEST (Tank)

Pumped Electric – Tank Fed

Ideal for low water pressure areas, the integrated pump boosts the flow rate of your shower. This shower is designed specifically for use with a gravity fed cold water supply from a header tank (often in your attic).

Electric – Mains Fed

These showers are designed specifically for use with a mains fed cold water supply, the water pressure will only be that of your mains water.

Triton T80Z



Code: T80Z (Mains)

Mira Jump



Code: MIRAJUMP (Mains)

Triton AS2000T



Code: AS2000T

Mira Vigour



Code: MIRAVIGOUR

Power Shower – Gravity Fed Hot & Cold Supply

Ideal for low water pressure systems. Designed specifically for use with gravity fed hot and cold water supplies. Power showers are not compatible with combi boilers as they require a water source from both hot and cold water tanks.

Mixer Showers

Trevi Therm Concealed



Code: A3000AA

Trevi Therm Exposed



Code: A2158AA

Mixer Shower – Mains Fed Hot & Cold Supply

Mixer showers mix hot and cold water together to create a shower temperature to suit you. The cold water comes directly from your cold water mains and the hot water comes from your heating system – so this could be directly from a combi boiler or from a hot water tank.

The mixer's valve blends the two water sources together to reach the required temperature that you've defined on the mixer shower.

Mixer Shower – Mains Fed Hot & Cold Supply

Mixer showers mix hot and cold water together to create a shower temperature to suit you. The cold water comes directly from your cold water mains and the hot water comes from your heating system – so this could be directly from a combi boiler or from a hot water tank.

The mixer's valve blends the two water sources together to reach the required temperature that you've defined on the mixer shower.

Inta Eco 10014CP



Code: 10014CP

Alto Eco Therm



Code: A5634AA

Booster Pumps (Shower Only)



Showermate Contract Twin Impellor Pumps

1.5 Bar Twin Impellor Contract Positive Head Plastic Pump (Code: 44370)

2.0 Bar Twin Impellor Contract Positive Head Plastic Pump (Code: 44371)

Booster Pumps

Brass Body Positive & Negative Head Shower Booster Pumps

Grundfos Positive Head

- 2.0 Bar Single Impellor Brass Positive Head Pump (Code: SSP20B)
- 3.0 Bar Single Impellor Brass Positive Head Pump (Code: SSP30B)
- 1.5 Bar Twin Impellor Brass Positive Head Pump (Code: STP15B)
- 2.0 Bar Twin Impellor Brass Positive Head Pump (Code: STP20B)
- 3.0 Bar Twin Impellor Brass Positive Head Pump (Code: STP30B)
- 4.0 Bar Twin Impellor Brass Positive Head Pump (Code: STP40B)



Monsoon Positive Head Twin Impellor

- 1.5 Bar Twin Impellor Brass Positive Head Pump (Code: 44351)
- 2.0 Bar Twin Impellor Brass Positive Head pump (Code: 44327)
- 3.0 Bar Twin Impellor Brass Positive Head Pump (Code: 44328)
- 4.2 Bar Twin Impellor Brass Positive Head Pump (Code: 44329)

Grundfos Negative Head

- 2.0 Bar Single Impellor Brass Negative Head Pump (Code: SSN20B)
- 3.0 Bar Single Impellor Brass Negative Head Pump (Code: SSN30B)
- 1.5 Bar Twin Impellor Brass Negative Head Pump (Code: STN15B)
- 2.0 Bar Twin Impellor Brass Negative Head Pump (Code: STN20B)
- 3.0 Bar Twin Impellor Brass Negative Head Pump (Code: STN30B)
- 4.0 Bar Twin Impellor Brass Negative Head Pump (Code: STN40B)



Monsoon Negative Head Twin Impellor

- 1.5 Bar Twin Impellor Negative Head Pump (Code: 44352)
- 2.0 Bar Twin Impellor Negative Head Pump (Code: 44331)
- 3.0 Bar Twin Impellor Negative Head Pump (Code: 44332)
- 4.2 Bar Twin Impellor Negative Head Pump (Code: 44333)

Shower Accessories

Multi-Function Head CP



Code: MXRBC

Shower Kit CP (Head, Hose & Rail)



Code: MXRDL

250mm Shower Arm CP



Code: MXRFJ

Fixed Shower Head 200mm



Code: MXRFE

Shower Hose 1.5mtr



Code: MXRCE

Wall Elbow Outlet CP



Code: MXRFN

Saniflo Units

SANIFLO	Saniflo Silence	(WC)
SANITOP	Sanitop Silence	(WC & BASIN)
SANIPRO	Sanipro Silence	(WC,BASIN,SHOWER & BIDET)
SANIPLUS	Saniplus Silence	(WC,BASIN,SHOWER & BIDET)
SANIPACK*	Sanipack	(WALL HUNG WC)
SANISLIM*	Sanislim	(WC,BASIN & SHOWER)
SANICOMPACT*	Sanicompact	(WC & BASIN)
SANIBEST*	Sanibest	(WC,BASIN,SHOWER & BIDET)
SANICUBIC*	Sanicubic	(MULTIPLE WC)



Saniflo Units - Pumps

SANISHOWER	Sanishower	(SHOWER,BASIN & BATH)
SANIVITE	Sanivite	(DISHWASHER,WASHING-MACHINE,SINK & SHOWER)
SANISPEED	Sanispeed	(DISHWASHER,WASHING-MACHINE,SINK & SHOWER)
SANICONDENS*	Sanicondens	(BOILER,AC & FRIDGE)
SANICOM*	Sanicom	(MULTIPLE SHOWER,BATHS & SINKS)

* Non Stock Item



Pan Connectors & Traps

Angled



Code: ADPC

Straight



Code: SDPC

Flexible



Code: FLEXIMW

Offset



Code: ODPC

Spacesaver



Code: SSDPC

Extension



Code: ODPC

Shower



Code: MCAST150

Pedestal



Code: PEDT125

Bath



Code: SSBT150

Sink Trap c/w 1 conn



Code: STWMC150

Sink Trap c/w 2 Conn



Code: STWMC1502

Upstand Trap



Code: WMT150

Furniture & Accessories

Bemis Seat



Code: BEMISSEAT

Kumfi Seat



Code: SWKQ

Kosy Soft Close



Code: SWKCQ

Basin Waste



Code: CPBW125

Captive Waste



Code: W1112S

Pop Up Waste



Code: PUWCP

Kinsale 55cm Vanity Unit & Sink



Code: KINVU55 & KINVB551TH

S - Trap 1 ¼" & 1 ½"



Code: ST125 & ST150

P - Trap 1 ¼" & 1 ½"



Code: PT125 & PT150

**Various traps available on request*

Ballvalves & Syphon Kits

PVC Ballvalve Side Supply



Code: PVCBV050

PVC Ballvalve Bottom Supply



Code: PVCBV050S

Jollyflush Dual Syphon Kit



Code: 14010402

Round Internal Syphon



Code: DYS7125

Oblong Internal Syphon



Code: DYS8725

Square Internal Syphon



Code: DYS7925

Dual Push Button CP



Code: 10717795

Chrome Cistern Lever



Code: KPCMLP

Fischer Bolts



Code: Fisc20

Concealed Cistern & Flush Plates

*Conceala 2 Single Flush
Side Supply, Internal Overflow
c/w Lever*



Code: S361767

*Conceala 2 Pneumatic Dual
Flush Cistern, Internal Overflow
Top Inlet.*



Code: S362467

*Contemporary Dual Flush Plate
Unbranded for use with
Conceala 2 Cisterns*



Code: S4399AA

Doc M Pack

intacare



*Doc M Close Couple WC Pack
c/w White Rails*

Code: DM601WH

intacare



*Doc M Low Level WC Pack
c/w White Rails*

Code: DM600WH

Doc M Pack – Armitage Shanks



*Doc M Close Couple WC Pack
c/w White Rails*

Code: S6941AC



*Doc M Low Level WC Pack
c/w White Rails*

Code: S6984AC

Titan Mixing Valve

Titan TMV3 Mixing Valve



Code: TMV3050 & TMV3075

- TMV3 Rated
- Temperature Setting Range 35° - 46°
- Wras Approved
- Available in both ½" & ¾"





Contact Details



Area Managers			
Name	Area	Phone Number	Email Address
Stephen Christie	Northwest	086 608 8408	stephenchristie@hevac.ie
Pat Fitzpatrick	Midlands/SE	086 254 9076	patfitzpatrick@hevac.ie
Clive Leinster	North East	086 601 8371	cliveleinster@hevac.ie
Sean Ahern	Munster	086 833 1631	seanahern@hevac.ie
Chris Crowley	Dublin	086 803 0398	chriscrowlev@hevac.ie
Naas Road Office : Muirfield Drive, Naas Rd . Dublin 12			
Name		Phone Number	Email Address
Damien Byrne		01 419 1919	damienbyrne@hevac.ie
Dave Grenville		01 419 1919	davegrenville@hevac.ie
David Verschoyle		01 419 1919	dvidverschoyle@hevac.ie
Santrv Office : Furry Park Ind Est. Santrv. Dublin 9			
Name		Phone Number	Email Address
Emmet Purcell		01 842 7037	emmetpurcell@hevac.ie
Alan Seerv		01 842 7037	alanseerv@hevac.ie
Sean Mc Cluskey		01 842 7037	seanmcccluskev@hevac.ie
Derek Heffernan		01 842 7037	derekheffernan@hevac.ie
Cork Office : South Ring West Bus Prk.Tramore Road. Cork			
Name		Phone Number	Email Address
Tom Cashman		021 432 1066	tomcashman@hevac.ie
Bill Aherne		021 432 1066	hillaherne@hevac.ie
Shane Scully		021 432 1066	shanescully@hevac.ie